

HEMATOLOGY & ONCOLOGY BEST PRACTICES

Frequently Asked Questions (FAQ)

Q: Are you offering virtual registration for this year's course?

A: No, we will be hosting this year's course in person. If you wish to purchase the 2021 On-Demand Home Study course, you can register through this link-

[2021 Hematology and Oncology Best Practices On-Demand Course](#)

The course offers pdf slide handouts along with the course syllabus, video presentations and board review type review sessions. You will have access to the course until **December 31, 2022**, and can access via PC, mobile device, or smartphone. Video presentations are not downloadable.

Q: When will the live course sessions take place this year?

- A:
- HEMONC Best Practices (8-Day Course): August 11-18, 2022
 - Hematology Best Practices (5-Day Course): August 11-15, 2022
 - Oncology Best Practices (5-Day Course): August 14-18, 2022

Q: When will the 2022 On-Demand Home Study Course be available for purchase?

A: The course will be available for purchase 2 weeks after the live session takes place in late August.

Q: Do you offer group discounted rates for the course?

A: Yes, we offer discounted rates for groups of 5, 10 and 20 registrants. If you wish to register for your group, please contact the FINA Logistics Conference Services Team at HEMONCBP_Inquiries@finaww.com.

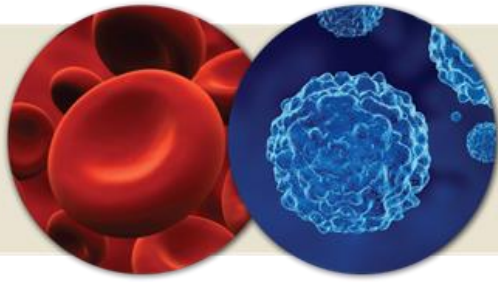
Q: Can I pay for this course by personal or company check?

A: Yes, you can pay by check, but please allow 6-8 weeks for the check to be received/processed by GW. Unfortunately, GW is experiencing delays receiving mail check payments through the US. Postal Service. We would recommend purchasing your course via credit card to ensure that you can attend the program without experiencing any payment delays confirming your course registration.

Q: How many CME credits will I earn for this course? How can I claim my credits and/or MOC points?

- A:
- HEMONC Best Practices (8-Day Course): **70.25** ABIM MOC 2 | AMA PRA Category 1 Credit™
 - Hematology Best Practices (5-Day Course): **53.50** ABIM MOC 2 | AMA PRA Category 1 Credit™
 - Oncology Best Practices (5-Day Course): **50.75** ABIM MOC 2 | AMA PRA Category 1 Credit™

Once you complete your course (live or on-demand home study), you will be able to claim your credits and MOC points. In order to claim your MOC points, please ensure you have the following information available in your GW account, so GW can submit your points to ABIM on your behalf: **(1)** ABIM ID # | **(2)** Verified Associated Name | **(3)** Date of Birth (month and day only)



HEMATOLOGY & ONCOLOGY BEST PRACTICES

Q: Will the conference organizers practice social distancing or establish COVID-19/variants safety measures during the conference days?

A: Yes, conference attendees will practice social distancing and mask mandates (if this is a state requirement in August). We will be periodically conducting mandatory rapid Covid-testing during the program dates, if necessary. The conference hotel will frequently sanitizing the hotel common areas and conference rooms.

Q: Where will the conference take place this year?

A: The Ritz-Carlton, Pentagon City
1250 S Hayes Street, Arlington, VA 22202
Phone: +1-703-415-5000
Check-in: 4:00 PM | Checkout: 11:00 am

Q: What is the hotel room rate? When will I be able to book my room reservations?

A: The group room rate is **\$194.00** per night, plus 14.25% room tax (8.25% occupancy and 6% sales tax)

- Reservations can be booked directly through the hotel beginning on **Friday, May 13, 2022**. You can call **+1-703-415-5000** or **+1-800-422-2410** and refer to group code (*to be confirmed on May 13th*). Individual guestroom reservations may also be booked on the Reservations page of www.ritzcarlton.com by entering the assigned group code
- Group Name: GW HEMONC Best Practices | Group Code: (TBC)
- Room Type: King Bed or Double/Double Beds
- All reservations should be received by the Hotel no later than **Tuesday, July 19, 2022**
- Cancellations are permitted **72 hours** prior to arrival to avoid cancellation penalty of one night's room and tax fee
- You will be required to guarantee your room reservation with a major credit card when booking your reservation

Q: What is the nearest airport from The Ritz-Carlton, Pentagon City?

A: **Ronald Reagan Washington National Airport**- 15 minutes away from The Ritz-Carlton, Pentagon City

Other Nearby Airports:

Dulles International Airport- 40 minutes away from The Ritz-Carlton, Pentagon City

Baltimore/Washington International Thurgood Marshall Airport (BWI)- 60 minutes away from The Ritz-Carlton, Pentagon City

Q: Who can I contact if I have any additional questions about the course?

A: Please email the FINA Logistics Conference Services Team at HEMONCBP_Inquiries@finaww.com.